



Country Grove Courier

❄️ HOLIDAY EDITION ❄️

December 2006

The Country Grove Neighborhood Association Newsletter

www.countrygrove.org

Country Grove Neighborhood Association Board Members 2006-07

President
Pam James
president@countrygrove.org

Vice President
OPEN

Treasurer
Cami Douglas
treasurer@countrygrove.org

Secretary
Jan Viney
secretary@countrygrove.org

Covenants & Architectural
Issues/Webmaster
Mitch Kite
covenants@countrygrove.org

Membership Coordinator
Joanne Gabriel
membership@countrygrove.org

Social Committee
Glori Trummer
Social@countrygrove.org

Head Block Captain
Armande Fruhling

Newsletter Editor
Alicia Lundal
newsletter@countrygrove.org

CGNA Holiday Toy Drive



Here's an opportunity for you to kick off the holidays by doing something wonderful -- Neighbors, let's share our holiday joy with pediatric patients at UW Hospital by brightening their day with a special gift of a toy just for them!

You can drop off an unwrapped toy(s) at the home of Joy and Stuart Geenen at 7305 Countrywood Lane before **December 15**. Donations will be delivered to the children in time for the holidays.

Only **new** toys are accepted. Toys and gifts are needed for all age groups (infant through teens). All items must be commercially made and packaged (please no homemade items). Toys not distributed during the holidays are kept for birthdays, treasure box items, and departments where children are often treated including radiology, emergency and clinics throughout the hospital.

Any gift is welcome but if you're in need of an idea you can view the UW Children's Hospital "wish lists" at Toys 'R' Us (online at www.toysrus.com/registry/index.jsp; access the registry page and enter uwch in the last name field) OR Target (online at <http://www.target.com/>, select Gift Registries and enter uwch in both the first name and last name fields, with the Mother radio button selected).

Or you can view a more extensive list categorized by age levels at www.countrygrove.org.

Thank you in advance, Country Grove residents, for making the holidays a little extra special with a gift from your home to one of the children at UW Hospital.

We want to know what you would like to see in your neighborhood newsletter. Interested in submitting an article?

Issues you'd like to see addressed? Email us at newsletter@countrygrove.org



I'M YOUR NEIGHBOR on Maple Point Drive.

I sincerely care about our neighborhood.

With over 30 years of experience, I can help you with any of your real estate needs.

Libby



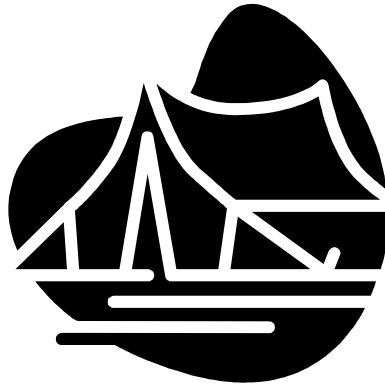
Libby Monson Realtor, GRI, ABR 608 444-3963

lmonson@StarkHomes.com www.libbymonson.com

NEIGHBOR NEWS

Congratulations to Jeff and Tracy Spielman who welcomed Emily Louise to their family on November 10 (one day before Daddy's birthday). Daughter Allison is enjoying being a BIG sister for the first time, and Mom is getting plenty of help from their oldest daughter, Kelly. Best wishes to all 5 of you from your neighbors!

If you know of other new babies in the neighborhood or accomplishments by any of our wonderful neighbors (graduation, weddings, milestone anniversaries), please let us know at newsletter@countrygrove.org.



It's never too early to start thinking about your spring party planning...

If you are interested in renting the large white tent that you have seen used at CGNA picnics, please contact Glori at social@countrygrove.org. It's perfect for graduation open houses and holiday festivities in your very own backyard.

If you're interested the tent also comes with a volleyball net for further enjoyment at your gathering. The rental cost is \$20 for CGNA members and \$30 for non-members who are residents of Country Grove Estates.

Interested in placing a business ad in the Country Grove Courier? The newsletter is delivered to over 300 homes. advertise@countrygrove.org

For more information about our neighborhood and its happenings, Check out countrygrove.org



Monster Bash 2006

Another spooktacular time was had by the residents of Country Grove Estates and the Glacier Edge Neighborhood Association as they celebrated Halloween together at the annual Monster Bash in October.

Children (and the young at heart) enjoyed the evening filled with music by the disc jockey, dance walk, and, of course, LOTS of snacks!

Thank you to Katy Culver, Glori Trummer, and a host of volunteers for making this a

BOO-tiful



Wondering how your CGNA Membership Dues will be spent in 2006?

Current projections:

Entrance Upkeep	\$999
Survey	\$100
Newsletters	\$464
Neighborhood Directory	\$840
Signs	\$290
Welcome Kits	\$375
Website	\$50
Social Events	\$829

Alderman Zach Brandon has a blog to keep constituents updated on developments in our district. Check it out at www.zachbrandon.blogspot.com

The Vinery

Stained Glass Studio

4317 W Beltline Hwy
Madison, WI 53711
608.271.2490



Classes are starting now
mosaics
fused glass
beadmaking
stained glass



LISA MOHAR, CRS, GRI
RENEE CHRISTMAN,
ABR



- * Consistently Top 5 in the Company
- * Over 29 yrs Combined Experience.
- * Twice the Service!
- * Renee lives in the neighborhood!



276-5218 Lisa / 278-4166 Renee
www.LisaandRenee.firstweber.com

Your Dog...?

Call Bark Busters - Any Problem, Any Age





Lifetime guarantee





2935 S. fish Hatchery
608.278.2488 (phone)

Madison, WI 53711
608.278.2489 (fax)

Help build a house



without pouding a nail!

Volunteers needed at HospiceCare Inc.

What difference does a couple of hours make? At HospiceCare -- a lot!

You'd be surprised at the variety of volunteer opportunities that HospiceCare offers: helping in the kitchen, gardening, visiting with patients, working with computers...whatever your skills or interests, we could use a helping hand—yours!

Want to learn more?

You CAN make a difference. Start today.

For more information, call **Claire Carlson** at 327-7163 or visit

www.hospicecarinc.com. On the "Volunteers" subhead click on "Application."

An experience of a lifetime awaits you!
Contact HospiceCare today!

The Habitat ReStore, your local building material reuse and surplus center, currently needs volunteers to prepare donations for sale and stock shelves. Many of our volunteers work one shift per week, but we can offer flexible scheduling as needed! Right now our greatest need is Wednesday and Thursday afternoons and Saturday morning or afternoon. All proceeds from the Habitat ReStore go to Habitat for Humanity of Dane County. Please partner with us in this effort to continue funding affordable housing in Dane County. Contact Amanda at the Habitat Restore 608-661-2813 or apurington@restoredane.org for more information.

Visit us at 208 Cottage Grove Rd, Madison

Wednesday-Saturday from 10am-6pm

www.restoredane.org



Happy Holidays to all Country Grove Estates neighbors



2006 Country Grove Holiday Home Decorating Contest

Are you ready to decorate the outside of your home for the holidays? Whose house will have cars stopping and gawking this holiday season?

This year homes will be competing individually (instead of zones), so bring it on, friends!

Judging will take place on the evening of Monday, December 18. Awards will be given in the following categories:

1. Creativity

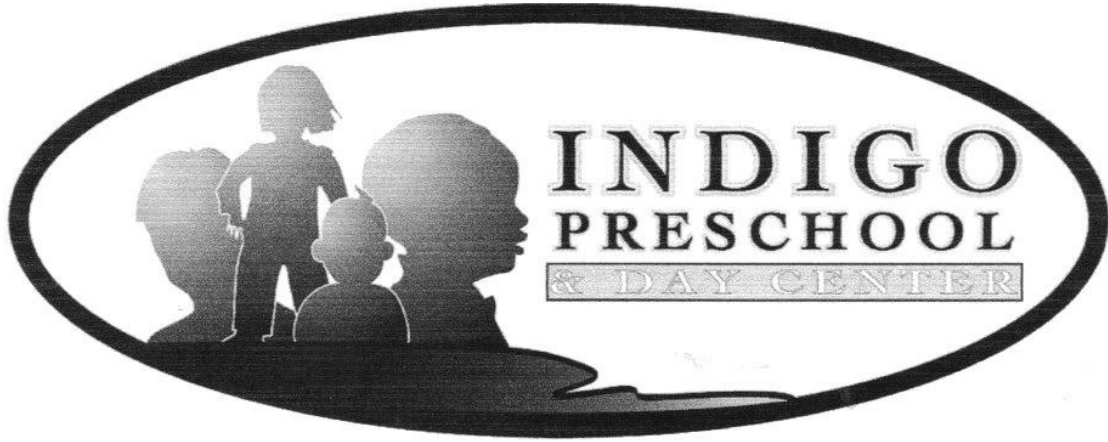
We are looking for something that says "Wow - I haven't seen that before!" Uniqueness counts and themes can range from whimsical to serious.

2. Overall Aesthetic

A home doesn't have to have a huge amount of lights displayed to win. A sense of balance and symmetry will often outscore the masterfully arranged, high-voltage light displays.

First place winners in each category will each receive a \$50 gift certificate to a local eatery. Winners, along with other 'honorable mentions,' will have their photographs posted on the CGNA website.

Who will win the bragging rights in 2006??



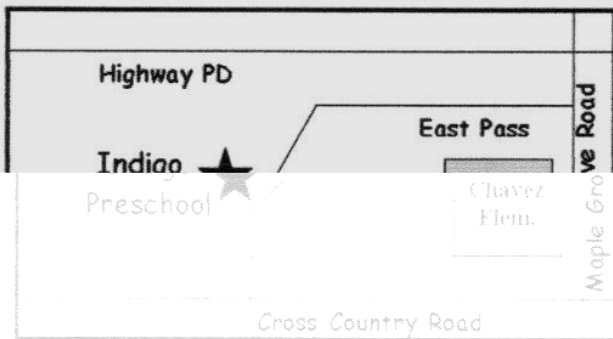
Now Enrolling!

Children Ages 6 Week—12 Years

Before & After School Programs For School Children

Call 848-6717 to schedule your tour of our brand new
state-of-the-art facility today!

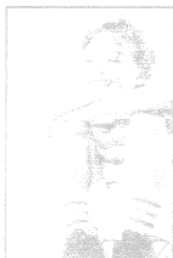
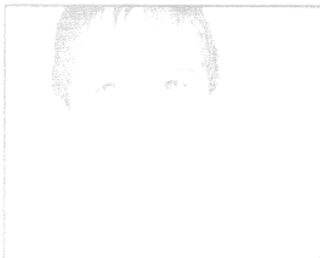
Come see where we make learning *fun!*



**Conveniently located near
Chavez Elementary!**

3751 Mammoth Trail
(Corner of East Pass & Mammoth Trail)

Transportation to and from
Chavez Included!



This is not a school sponsored activity and the Madison Metropolitan School District does not approve, support or endorse this program/activity.